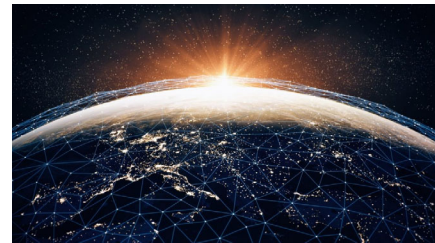




CURRENT TOPICS

- Amazon seeks to launch 3236 “Internet Satellites”
 - SpaceX plans for 4,425 satellites
 - Target is 3.8 billion people worldwide without fast reliable service
 - 21 million Americans still without fast reliable service



CURRENT TOPICS



• FaceApp

- Available since 2017 but blowing up due to "FaceApp Challenge"
- Photo filter for aging
- Currently 80 million active users
- Senate calling for investigation into "Russia-based company"
- Wireless labs is headquartered in St. Petersburg
- Company claims max 48 lifetime of their copy of the photo in the cloud using Amazon and Google Web Services
- App users required to provide full, irrevocable access to their personal photo and data
- Could be used as input to facial recognition/faking
- Suggest you not use or delete if you have

CURRENT TOPICS

- Facebook proposed **Libra** “cryptocurrency”
 - Blockchain based digital coin
 - Target is 1.7 billion “unbanked” adults
 - Could disrupt current payment processing systems
 - This is a “stablecoin” backed by real assets. Not like **BitCoin**
 - Basically, this is a proposal for the International Bank of Facebook
 - Get heavy government pushback. Congressional hearings coming.



DISNEY BY THE NUMBERS

- 10 PEOPLE
- 8 DAYS
- 4 PARKS
- 3,615 PICTURES
- 55 MILES WALKED
- PRICELESS MEMORIES



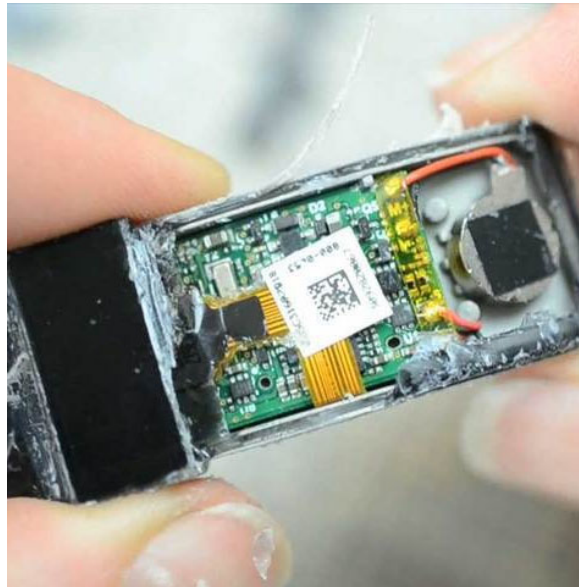
MAGICBAND TECHNOLOGY

- KEY TO IDENTIFY AND ACCESS MANAGEMENT (IAM)
- SHORT RANGE RFID
- LONG RANGE RADIO WITH 40-FOOT RANGE
- BATTERY LIFE OF ABOUT 2 YEARS
- \$1 BILLION IMPLEMENTATION



MAGICBAND TECHNOLOGY

- USED AT THE AIRPORT TO ROUTE LUGGAGE AND MAGICAL EXPRESS
- USED AS ROOM KEY
- USED FOR PARK ENTRANCE
- USED FOR FASTPASS+ ACCESS
- USED FOR DISNEY PHOTOPASS
- USED FOR RIDE PHOTOS
- USED FOR PAYMENTS
- USED FOR RESTAURANT TABLE LOCATION



MAGICAL EXPRESS

- AIRPORT TO PARK TRANSPORTATION
- LUGGAGE DELIVERED DIRECTLY TO YOUR ROOM



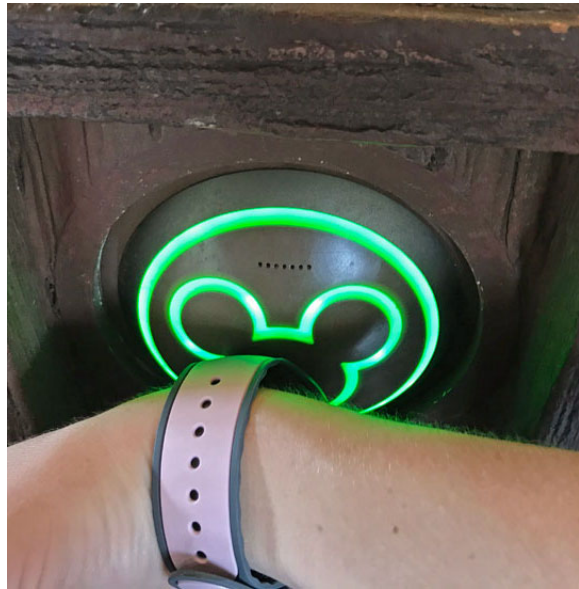




MAGICBAND TECHNOLOGY

• FASTPASS+ ACCESS

- BOOK A RIDE TIME (1 HOUR) VIA "My DISNEY EXPERIENCE" APP
- 60 DAYS IN ADVANCE FOR "ON PROPERTY" GUESTS
- MAXIMUM OF 3 IN ADVANCE
- AVAILABILITY ADDED THROUGHOUT THE DAY FOR DAILY GUESTS
- NO TWO-FACTOR FOR RIDES





MAGICBAND TECHNOLOGY

- Disney Photopass
 - Disney photographers throughout the parks
 - Link all members of the group to one Photopass account
 - Edit the pictures
 - Package for unlimited photo download
 - Purchase individual pictures

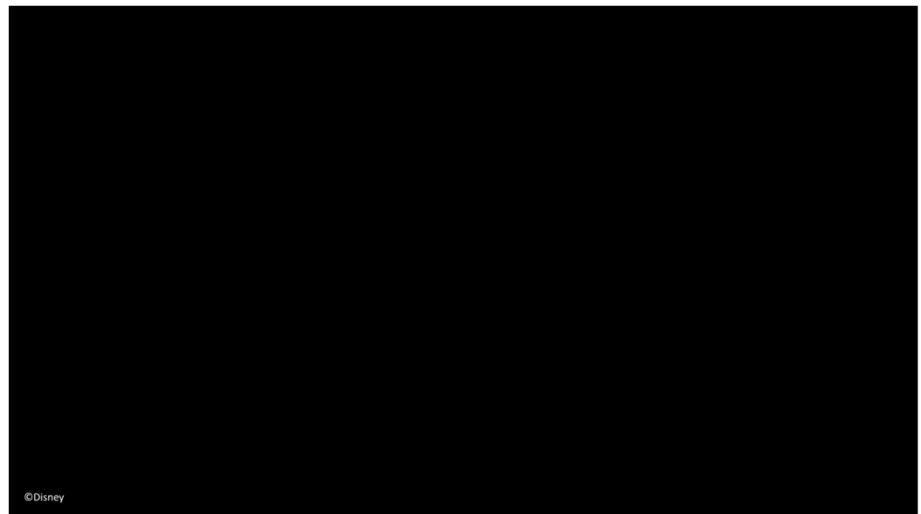
MAGICBAND TECHNOLOGY

- INNOVATIVE OPTIONS



MAGICBAND TECHNOLOGY

- RIDE VIDEOS



MAGICBAND TECHNOLOGY

- PAYMENTS
- TWO-FACTOR WITH PIN





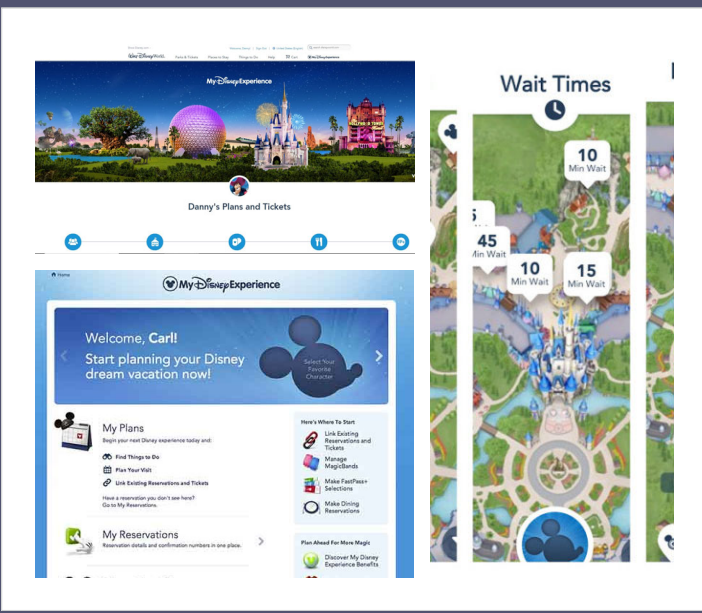
MAGICBAND TECHNOLOGY

- LOST BAND?
- NO PROBLEM!
- BUY A NEW ONE
- DEACTIVATE LOST ONE
- LINK NEW ONE VIA APP



MY DISNEY EXPERIENCE

- App
- Website





**DISNEY
TECHNOLOGY**

PERSONALIZE INFORMATION



From your Friends at Disney's Polynesian Village Resort Concierge

The Ksander Family's
GUIDE TO THE MAGIC



Scott



Peggy

Your Plans for Tuesday
June 04, 2019

-  **Animal Kingdom Theme Park**
9:00 AM to 9:00 PM
-  **Kilimanjaro Safaris**
9:30 AM to 10:30 AM
Plans for Peggy
-  **Expedition Everest - Legend of the Forbidden Mountain**
10:30 AM to 11:30 AM
Plans for Peggy
-  **Na'vi River Journey**
12:20 PM to 1:20 PM
Plans for Peggy

To make changes and view your most up to date plans, please visit your *My Disney Experience* account.

 **High 93°**
50% Chance of Storms

Disney Photopass® Service



Looks like you have an exciting day planned for tomorrow! When you ride Expedition Everest- Legend of the Forbidden Mountain®, Disney PhotoPass Service will capture a thrilling



DISNEY FUN FACTS

- 74,000 CAST MEMBERS WORK AT DISNEY WORLD
- YOU CAN'T BUY GUM ANYWHERE IN DISNEY WORLD
- 36 RESORTS, OVER 30,000 HOTEL ROOMS
- 350 CHEFS IN OVER 300 DINING SERVICES
- DISNEY LAUNDRY AVERAGES 285,000 POUNDS OF LAUNDRY PER DAY
- DISNEY WORLD HAS OVER 4,000 ACRES OF MAINTAINED LANDSCAPES
- DISNEY WORLD SPANS 40 SQUARE MILES WITH 25,000 ACRES FOR CONSERVATION
- MOST CAST MEMBERS CAN TELL YOU WHERE THE BATHROOM IS IN 14 LANGUAGES
- ADMISSION WAS ON \$3.50 WHEN DISNEY WORLD OPENED IN 1971



